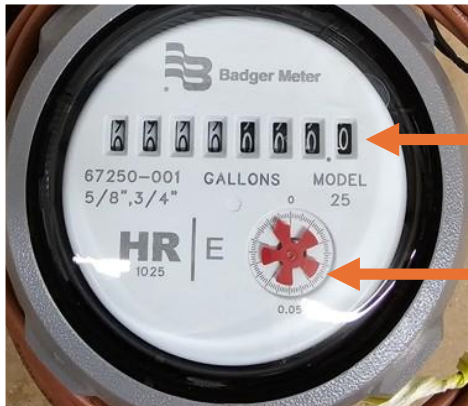


# How to Read Your Water Meter

Reading your meter can help you monitor water usage, discover leaks, and conserve water.

Your meter is usually located in a box near the road on the right-of-way at the edge of the property. **Open the box lid carefully**, as there may be an antenna and wire in the lid attached to the meter. And be careful as critters like wasps, snakes, and spiders can take up residence in a meter box.

You should now see the meter. Open the protective cover to reveal the meter face.

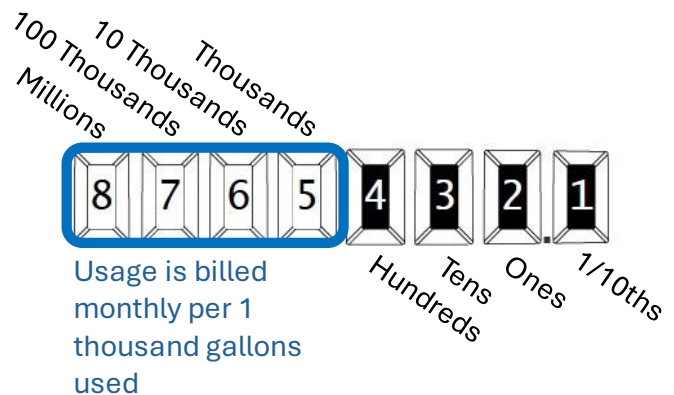


**Meter Dial** – Read from left to right and determines how much water has been used since it was installed.

**Flow Indicator** – This spins if water is flowing through the meter. If it is spinning when no water is being used, you may have a leak.

The numbers on the dial are read from left to right and measure gallons of water used. Take a clear picture and note the time and day of the numbers on the dial. To remember when it was taken, you may want to write the time and date on a piece of paper to include in the picture.

For billing purposes, only the numbers on white dials are used (circled in blue).



## HOW TO CALCULATE USAGE:

If in January the meter reads 65,132.1 gallons (sixty-five thousand, one-hundred thirty-two and 1 tenth gallons), the meter is read as **65 thousand gallons**.

JAN 65 Thousand



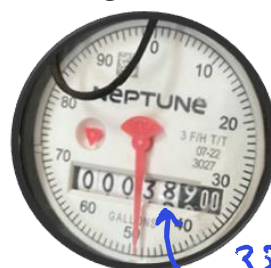
FEB 67 Thousand



Then if in February the meter reads 67,751.6 (sixty-seven thousand, seven-hundred one and 6 tenths gallons), the meter is read as **67 thousand gallons**.

Subtract **65** from **67**, and you would be billed for using **2 thousand gallons**.

FEB 67  
JAN-65  
2 Thousand Gallons Used



These meters look different, but they are read in the same way by using the white dials.

38 Thousand



416 Thousand